



## Sex identification of sun conure (*Aratinga solstitialis*) using loop-mediated isothermal amplification of W and Z spindlin chromosomes

Parichart Wancham<sup>1</sup>, Sakuna Phatthanakunanan<sup>2</sup>, Siriluk Jala<sup>2</sup>, Kanyakodchanan Woramahatthanon<sup>2</sup>,  
Supaphen Sripiboon<sup>3</sup> , and Preeda Lertwatcharasarakul<sup>4</sup> 

1. Animal Health and Biomedical Sciences Study Program, Faculty of Veterinary Medicine, Kasetsart University, Bangkok 10900, Thailand; 2. Kamphaeng Saen Veterinary Diagnostic Center, Faculty of Veterinary Medicine, Kasetsart University, Nakorn Pathom 73140, Thailand; 3. Department of Large Animal and Wildlife Clinical Science, Kasetsart University, Nakorn Pathom 73140, Thailand; 4. Department of Pathology, Kasetsart University, Nakorn Pathom 73140, Thailand.

**Corresponding authors:** Preeda Lertwatcharasarakul, e-mail: [preeda.le@ku.th](mailto:preeda.le@ku.th)

**Co-authors:** PW: [parichart.wan@ku.th](mailto:parichart.wan@ku.th), SP: [sakuna.p@ku.th](mailto:sakuna.p@ku.th), SJ: [siriluk.j@ku.th](mailto:siriluk.j@ku.th) KW: [kanyakodchanan.wora@outlook.com](mailto:kanyakodchanan.wora@outlook.com); SS: [supaphen.s@ku.th](mailto:supaphen.s@ku.th)

**Received:** 23-04-2024, **Accepted:** 02-08-2024, **Published online:** 08-09-2024

**doi:** [www.doi.org/10.14202/vetworld.2024.2000-2007](http://www.doi.org/10.14202/vetworld.2024.2000-2007) **How to cite this article:** Wancham P, Phatthanakunanan S, Jala S, Woramahatthanon K, Sripiboon S, and Lertwatcharasarakul P (2024) Sex identification of sun conure (*Aratinga solstitialis*) using loop-mediated isothermal amplification of W and Z spindlin chromosomes, *Veterinary World*, 17(9): 2000–2007.

### Abstract

**Background and Aim:** The sun conure (*Aratinga solstitialis*), a bird belonging to the Psittaciformes family, is a popular pet because of its bright color and beautiful appearance. The sun conure is a monomorphic bird with similar appearances between males and females, making sex identification difficult by observing the external morphology. Therefore, molecular techniques are utilized. Loop-mediated isothermal amplification (LAMP) is a molecular technique that is often applied for sex identification in birds and is a quick and simple method that can be used in the field. This study used the LAMP technique to improve sex identification in sun conures by observing the color change of hydroxy naphthol blue.

**Materials and Methods:** Two primer sets, SunSpin-W and SunSpin-Z, were designed for sex identification in sun conures using the LAMP technique specific to the spindlin gene. The developed LAMP reaction was tested for optimal conditions, sensitivity, and specificity compared with the polymerase chain reaction (PCR) technique.

**Results:** The SunSpin-W primer set amplified only female birds, whereas the SunSpin-Z primer set amplified DNA from both male and female birds. The primer sets were optimized at 62°C for 45 min. A positive result was visible to the naked eye from the color change of the reaction. In the LAMP assay, the lowest detectable concentration was 10 pg/μL and in the PCR assay, it was 1 ng/μL, while a 100% accuracy rate in sex identification was observed when comparing the LAMP assay results with the PCR assay.

**Conclusion:** This study successfully developed a LAMP technique for sex identification of sun conure, which took 45 min to complete and can be expanded for use in the field.

**Keywords:** loop-mediated isothermal amplification, sex identification, spindlin gene, sun conure.

### Introduction

Sun conures (*Aratinga solstitialis*), birds belonging to the Psittacidae family, are popular pets and are valued because of their vibrantly colored feathers, playful personality, and friendliness. Because of their popularity, sun conures are often bred for commercial purposes. A key component of successful breeding is accurate sex identification between males and females. However, the sun conure is a monomorphic bird with similar male and female appearances, making sex identification by external morphology [1]. There is a high demand for sun conures, and unsuccessful breeding may lead to illegal catches and importation.

Avian sex identification based on molecular techniques is now widely used to differentiate the heterogametic (ZW) and homogametic (ZZ) sex chromosomes of male and female birds [2]. In Psittacidae, the main molecular technique for sex identification is polymerase chain reaction (PCR) based on sex-limited markers [3]. Many genetic sex markers have been suggested for PCR-based molecular sexing, such as chromo-helicase-DNA binding protein 1 [4], the Nipped-B homolog gene [5], the RAS p21 protein activator 1 gene (RASA1) [6], and the 0.6 kb *EcoRI* fragment (EE 0.6) [7], as well as the spindlin gene in birds that exhibit different nucleotide sequences on the W and Z chromosomes [8]. In this study, the spindlin gene was effectively utilized for sex identification in Psittacidae [9].

The loop-mediated isothermal amplification (LAMP) technique has accuracy similar to PCR with a reaction time. It does not require electrophoresis for the interpretation of results [10]. LAMP DNA amplification reactions can be detected by

Copyright: Wancham, et al. Open Access. This article is distributed under the terms of the Creative Commons Attribution 4.0 International License (<http://creativecommons.org/licenses/by/4.0/>), which permits unrestricted use, distribution, and reproduction in any medium, provided you give appropriate credit to the original author(s) and the source, provide a link to the Creative Commons license, and indicate if changes were made. The Creative Commons Public Domain Dedication waiver (<http://creativecommons.org/publicdomain/zero/1.0/>) applies to the data made available in this article, unless otherwise stated.

monitoring turbidity [11], the fluorescence of phosphor under ultraviolet (UV) light [12, 13], and visual color changes using color indicators to simplify the interpretation of results [14, 15]. Collectively, these features make LAMP a convenient, user-friendly, and time-efficient technique. Therefore, this study developed the LAMP assay using a newly designed primer set based on the *spindlin* gene to provide a sex identification method for sun conure, which is a completely new primer design that can be developed for use in the field. It reduces problems related to time and correct breeding pairing.

## Materials and Methods

### Ethics approval

All animal experiment protocols were approved by the Institutional Laboratory Animal Care and Use Committee of the Kasetsart University of Thailand (Approval number ACKU65-VET-069, September 12, 2022).

### Study period and location

The study was conducted from August 2021 to May 2023 at the Biotechnology Laboratory, Kamphaeng Saen Veterinary Diagnostic Center, Faculty of Veterinary Medicine, Kasetsart University, Kamphaeng Saen Campus.

### Sample collection

In total, 94 dried blood spot samples from sun conures were obtained from the Kamphaeng Saen Veterinary Diagnostic Center. Each sample was stored in a zipper bag at  $-20^{\circ}\text{C}$  until DNA extraction.

### DNA extraction

DNA was extracted from dried blood spots using a modified alkaline extraction method [16]. Approximately  $3 \times 3$  mm of dried blood spots were placed in a sterile microtube, added with 20  $\mu\text{L}$  of 0.2 M NaOH, and incubated at  $75^{\circ}\text{C}$  for 20 min. Then, 180  $\mu\text{L}$  of 0.05 M Tris-HCl was added and mixed by a vortex. The extracted DNA was stored at  $-20^{\circ}\text{C}$  until use.

### LAMP primer design

A LAMP primer set of each *spindlin* W and Z gene was designed using the NEB LAMP Primer Design Tool (<https://lamp.neb.com/#/>) based on the nucleotide alignment between the *spindlin*-W gene (accession no. XM\_030510990 and XM\_030510991) and the *spindlin*-Z gene (accession no. XM\_030471366 and XM\_030471367) from the GenBank database using the ClustalW program in BioEdit version 5.0.9 software. Each primer set consisted of six primers: forward outer primers (F3), backward outer primers (B3), forward internal primers (FIP), backward internal primers (BIP), forward loop primers, and backward loop primers.

### Spindlin-gene cloning

DNA extracted from male and female sun conures was amplified for *spindlin* using PCR with the F3/B3

primers of each set. Amplicons of both sexes were cut from agarose gels and purified using a FavorPrep™ GEL/PCR Purification Mini kit (Favorgen Biotech Corporation, Taiwan) according to the manufacturer's instructions. The purified amplicons were cloned in a pLUG-Prime® TA-cloning Vector Kit II (iNtRON Biotechnology, Inc., Korea) and transformed into the *Escherichia coli* JM109 strain. PCR was performed to identify bacteria containing the target gene. Plasmids from bacteria cultured in LB broth overnight were extracted using a FavorPrep™ Plasmid Extraction Mini Kit (Favorgen Biotech Corporation) following the manufacturer's recommendation and used to optimize the LAMP reaction conditions.

### Optimization of the LAMP reaction conditions

A T100™ Thermal Cycler (Bio-Rad, USA) was used to optimize the LAMP reaction. The volume of the LAMP reaction was 25  $\mu\text{L}$  consisting of 1.4 mM deoxynucleotide triphosphates (dNTPs), 1X Isothermal Amplification Buffer, 1  $\mu\text{L}$  of 8 U of *Bst* 2.0 WarmStart DNA polymerase (New England Biolabs, USA), and six primers: 1.6  $\mu\text{M}$  inner primers (FIP and BIP), 0.4  $\mu\text{M}$  outer primers (F3 and B3), 1  $\mu\text{M}$  loop primers (LF and LB), 10 mM Magnesium sulfate ( $\text{MgSO}_4$ ), 1 M betaine, 0.16 mM hydroxy naphthol blue (HNB) (Loba Chemie Laboratory Reagents and Fine Chemicals, India), and 5  $\mu\text{L}$  plasmid DNA template and the reaction was adjusted to a volume of 25  $\mu\text{L}$  with nuclease-free water. All parameters relating to the optimal conditions of the LAMP assay were tested, including the differences in amplification temperatures (between  $55^{\circ}\text{C}$  and  $65^{\circ}\text{C}$ ), the concentration of  $\text{MgSO}_4$  (6–12 mM), the concentration of betaine (0.2–1 M), and reaction times (15, 30, 45, and 60 min).

### PCR

The PCR reaction was prepared in a volume of 25  $\mu\text{L}$  consisting of DreamTaq™ Green PCR Master Mix (2X) (Thermo Fisher Scientific, USA), 0.4 mM of each primer (2550F and 2718R) previously reported by Fridolfsson and Ellergen [17], and DNA template 5  $\mu\text{L}$ . The reaction volume was adjusted to a volume of 25  $\mu\text{L}$  with nuclease-free water. The reaction conditions consisted of pre-denaturation at  $94^{\circ}\text{C}$  for 5 min followed by 35 cycles of  $94^{\circ}\text{C}$  for 30 s,  $57^{\circ}\text{C}$  for 30 s, and  $72^{\circ}\text{C}$  for 30 s, with a final extension at  $72^{\circ}\text{C}$  for 5 min. The PCR products (5  $\mu\text{L}$ ) were then analyzed using 1.5% agarose gel electrophoresis with tris-acetate-ethylenediaminetetraacetic acid (TAE) buffer.

### Sensitivity and specificity of the LAMP assay

DNA concentrations were measured using a NanoDrop™ 2000 Spectrophotometer (Thermo Fisher Scientific). To determine the sensitivity of the assay, 10-fold serial dilutions of a DNA concentration of 10 ng/ $\mu\text{L}$  to 100 fg/ $\mu\text{L}$  were used as DNA templates. The LAMP reaction was performed under the optimized conditions, and 5  $\mu\text{L}$  of the product was analyzed using 1.5% agarose gel electrophoresis and observed visually from the LAMP reaction tube. If the

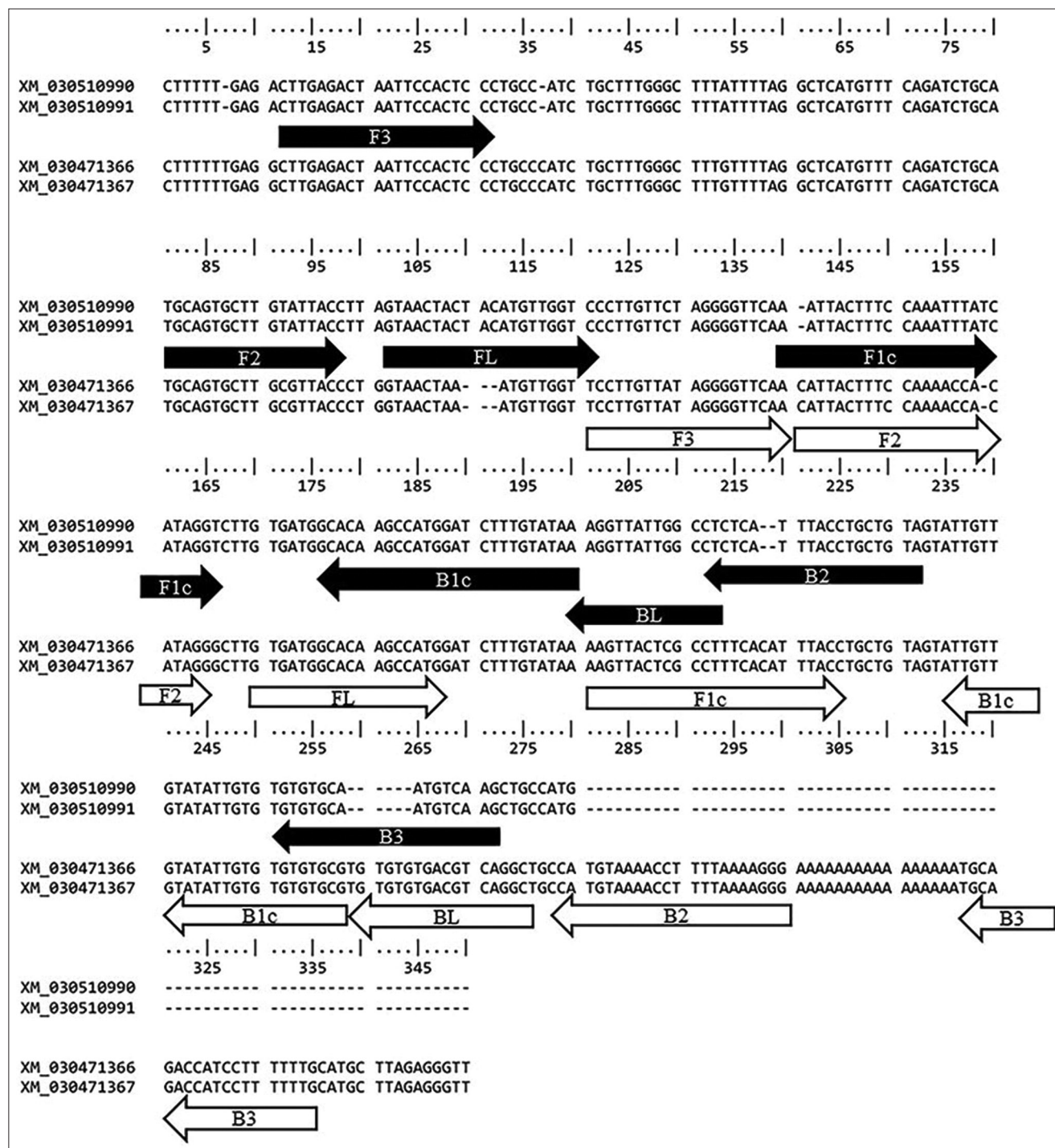
reaction occurred, the solution color changed from purple to sky blue and remained purple in the absence of the reaction.

The specificity of the LAMP reaction was assessed using DNA extracted from 94 blood samples consisting of 47 females and 47 males, which were sex-identified by PCR using the primers 2550F/2718R [17]. The DNA of seven different avian species, including African gray (*Psittacus Erithacus*), Cockatiel (*Nymphicus hollandicus*), Eclectus (*Eclectus roratus*), Forpus (*Forpus* spp.), Lovebird (*Agapornis* spp.), and Rose-ringed parakeet (*Psittacula Kramer*), was also tested.

### Results

SunSpin-W and SunSpin-Z primer sets were designed explicitly for the spindlin gene of W and Z chromosomes, respectively. Each primer set comprised six primers encompassing eight specific regions (Figure-1). The oligonucleotide sequences of the primers are summarized in Table-1.

In the LAMP assay, amplification reactions were performed at different temperatures ranging from 55°C–65°C. Results showed that both primer sets amplified the target gene at all temperatures with



**Figure-1:** Multiple nucleotide alignment of spindlin on the sex chromosome and the location of the designed primers. (Black arrow is primer set SunSpin-W and white arrow is primer set SunSpin-Z).

visualization of color changes (Figure-2I) and agarose gel electrophoresis (Figure-2II), whereas the temperature range of 58.8°C–65°C gave brighter bands in agarose gel electrophoresis than at other temperatures. A temperature of 62°C at which both sets of primers could be used for the sex identification of sun conure using the LAMP technique was chosen for the next experiment.

To convert the color from purple to sky blue, the optimal MgSO<sub>4</sub> concentrations for the SunSpin-W primer set were 10–12 mM (Figure-3AI), whereas at 10 mM, the electrophoresis amplicons were brighter (Figure-3AII). A MgSO<sub>4</sub> concentration of 6–12 mM for the SunSpin-Z primer caused the color of the sample to shift from purple to sky blue (Figure-3BI), and a DNA band appeared in the agarose gel electrophoresis (Figure-3BII). Because the color change was visible, both primer sets were used to identify the sex of the sun conures using the LAMP technique, and a concentration of 10 mM was selected. Amplification was detected at all betaine concentrations in both primer sets; hence, 0.2 M was selected as the final concentration for optimization (Figures-3C and D).

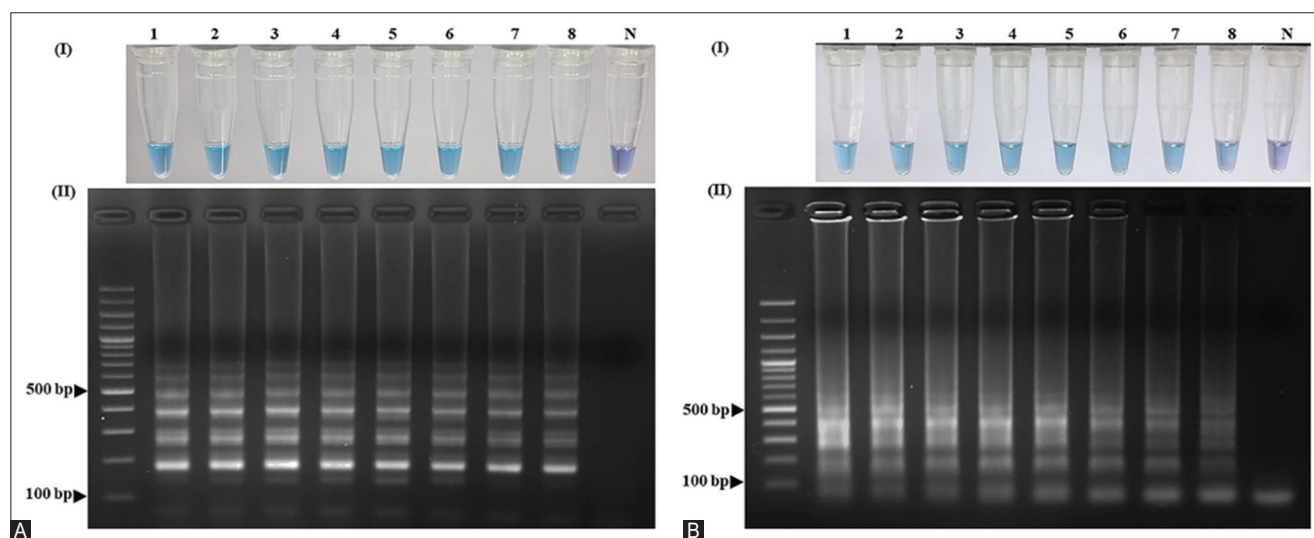
The limit of detection (LOD) of the LAMP assays was compared with that of the PCR assay using sun conure DNA as a template. The LOD of the LAMP technique using both primer sets, SunSpin-W and SunSpin-Z, was 10 pg/μL, which was detected visually by the naked eye (Figures-4AI and BI) and by agarose gel electrophoresis (Figures-4AII and BII). When using the PCR technique, the lowest detectable levels were 1 ng/μL in both male and female birds (Figures-4CIII and DIII). LAMP assays to detect 10 pg/μL DNA templates were run at 15, 30, 45, and 60 min to determine the optimal assay duration. The observed color changes and clear gel electrophoresis results for both primer sets indicated that DNA target amplification in both primer sets required at least 45 min to occur (Figures-5A and B). Considering the above data, the optimal LAMP conditions for sex identification using the SunSpin-W and SunSpin-Z primer sets were 62°C with 10 mM MgSO<sub>4</sub>, 0.2 M betaine, and a reaction time of 45 min.

In a comparison of sex identification results between LAMP and PCR techniques, the PCR technique based on 2550F/2718R primers gave two

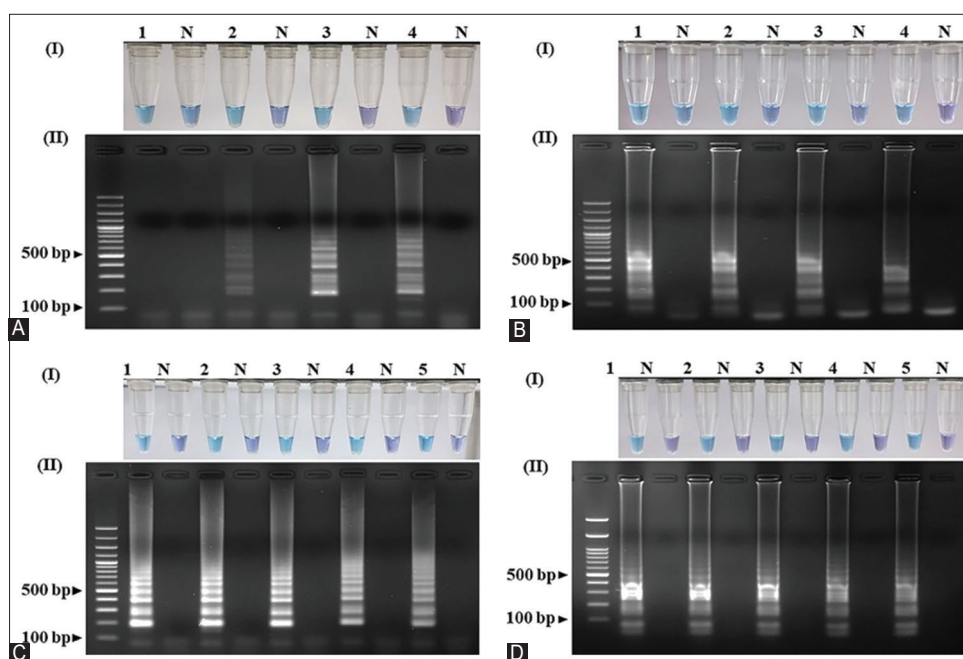
**Table-1:** Information of two LAMP primer sets for recognizing the spindlin genes on the W and Z chromosomes.

Primer set	Primer	Oligonucleotide (5'→3')
SunSpin-W	F3	CTTGAGACTAATTCCACTCCC
	B3	CTTGACATCATGCACACA
	FIP	ACCTATGATAAATTTGGAAAGTAATTATGCAGTGCTTGATTACC
	BIP	GCACAAGCCATGGATCTTTGTATAAAATACTACAGCAGGTAATGAGAG
	FL	GACCAACATGTAGTAGTTAC
	BL	AAAGGTTATTGGCCT
SunSpin-Z	F3	TCCTTGTTATAGGGGTTCAA
	B3	CAAAAAAGGATGGTCTGCA
	FIP	GGTAAATGTGAAAGGCGAGTAACTTCATTACTTTCCAAAACCATAGG
	BIP	ATTGTTGTATATTGTGTGTGTGCGCCCTTTAAAAGTTTTACATGG
	FL	CATGGCTTGTGCCATCAC
	BL	TGTGTGTGACGTCAGGC

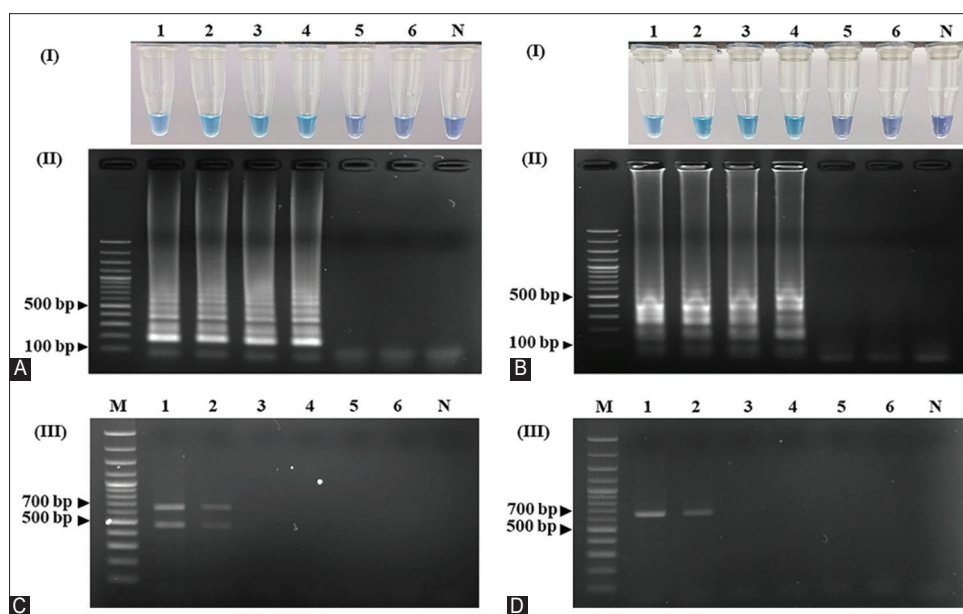
LAMP=Loop-mediated isothermal amplification



**Figure-2:** Optimization of the amplification temperatures for the LAMP primer sets (A) SunSpin-W and (B) SunSpin-Z. Visual inspection of amplified LAMP products with (I) HNB under daylight and (II) 1.5% agarose gel electrophoresis system. (N: non-template control, 1: 65°C, 2: 64.3°C, 3: 63°C, 4: 61.1°C, 5: 58.8°C, 6: 56.9°C, 7: 55.7°C, and 8: 55°C). LAMP=Loop-mediated isothermal amplification, HNB=Hydroxy naphthol blue.



**Figure-3:** Optimization of the LAMP assay with different concentrations of  $MgSO_4$  using the LAMP sexing primer sets (A) SunSpin-W and (B) SunSpin-Z. (N: non-template control, 1: 6 mM, 2: 8 mM, 3: 10 mM, and 4: 12 mM). Optimization of the LAMP assay with different concentrations of betaine in the LAMP sexing primer sets (C) SunSpin-W and (D) SunSpin-Z. (N: Non-template control, 1: 0.2 M, 2: 0.4 M, 3: 0.6 M, 4: 0.8 M, and 5: 1 M). Visual inspection of amplified LAMP products with (I) HNB under daylight and (II) 1.5% agarose gel electrophoresis system. LAMP=Loop-mediated isothermal amplification, HNB=Hydroxy naphthol blue.

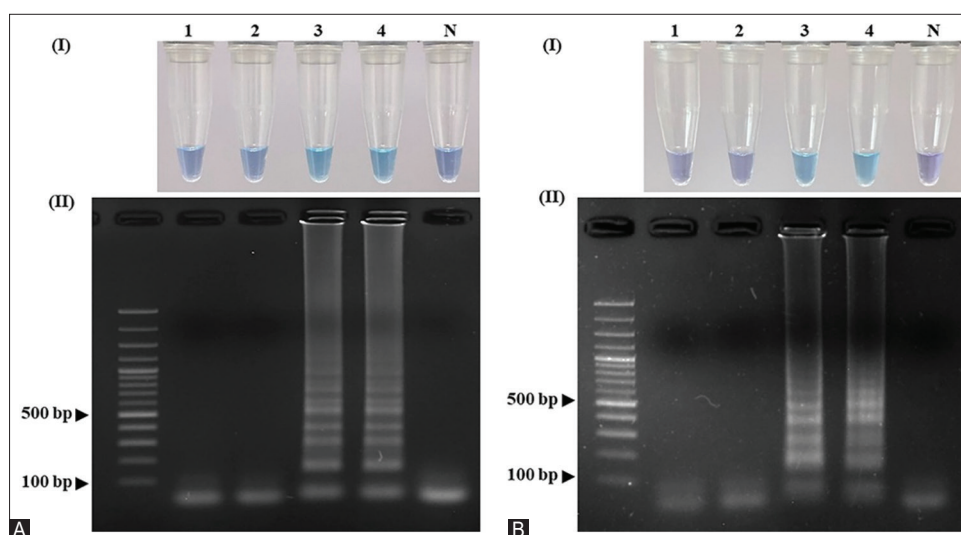


**Figure-4:** Limit of detections of the LAMP and PCR techniques. The LAMP technique using the (A) SunSpin-W and (B) SunSpin-Z primer sets was detected by (I) naked eye visual and (II) 1.5% agarose gel electrophoresis. PCR using 2550F/2718R detects extracted DNA from (C) female and (D) male (Lane M: DNA ladder, N: non-template control, 1: 10 ng/μL, 2: 1 ng/μL, 3: 100 pg/μL, 4: 10 pg/μL, 5: 1 pg/μL, and 6: 100 fg/μL). LAMP=Loop-mediated isothermal amplification.

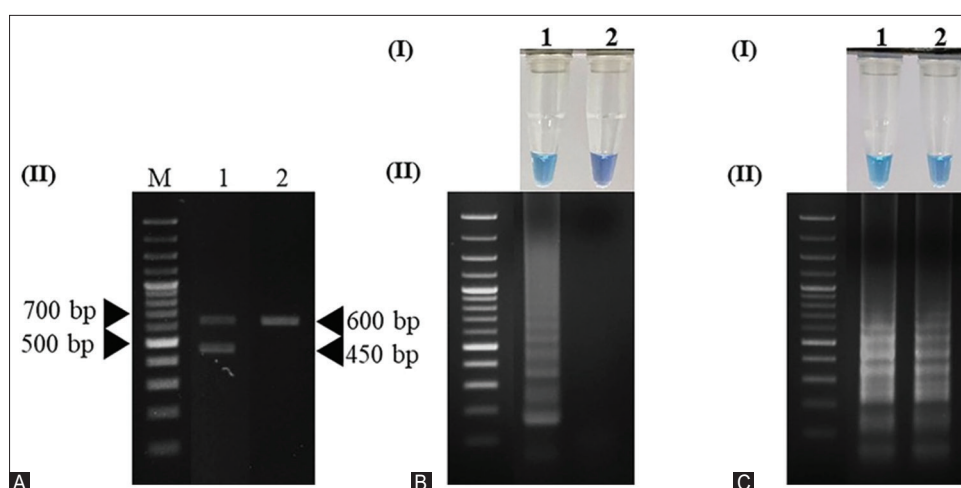
bands (600 bp and 450 bp) in females and only one band (600 bp) in males (Figure-6A). In the case of the LAMP technique, the ladder-like band and color change appeared only in females and both sexes when using the SunSpin-W and SunSpin-Z primer sets, respectively (Figures-6B and C). A total of 94 sun conures (47 males and 47 females) were used to compare the efficiency of these techniques. We

found that the results obtained by both methods were similar.

LAMP using SunSpin-W only amplified DNA samples from females, whereas LAMP using SunSpin-Z amplified DNA samples from both males and females. The LAMP technique was used for sex identification in seven different avian species. Results showed that these primer sets were able to identify the



**Figure-5:** Reaction time optimization of LAMP to detect 10 pg/ $\mu$ L DNA template at 62°C using the primer sets (A) SunSpin-W and (B) SunSpin-Z. Visual inspection of the amplified LAMP products with (I) HNB under daylight and (II) 1.5% agarose gel electrophoresis system. (N: non-template control, 1: 15, 2: 30, 3: 45, and 4: 60 min). LAMP=Loop-mediated isothermal amplification.



**Figure-6:** Comparison of sex identification results between PCR using (A) 2550F/2718R primer, LAMP techniques primers set (B) SunSpin-W and (C) SunSpin-Z. Visual inspection of amplified LAMP products with (I) HNB under daylight and (II) 1.5% agarose gel electrophoresis system. (Lane M: DNA ladder, 1: Female sun conure, 2: male sun conure). LAMP=Loop-mediated isothermal amplification, PCR=Polymerase chain reaction.

sex of other birds, including African gray (*P. Erithacus*), Cockatiel (*N. hollandicus*), Eclectus (*E. roratus*), Forpus (*Forpus* sp.), and Lovebird (*Agapornis* spp.), excluding the Rose-ringed parakeet (*P. Kramer*), which could not be sex-identified using this primer.

## Discussion

The CHD gene is a general genetic marker for identifying the sex of birds of different species. The CHD gene exhibits high conservation and distinct lengths on the Z and W chromosomes due to various intron sizes. Result interpretation usually depends on the number of bands identified by PCR, which requires electrophoresis to separate amplicon sizes. Female birds have two sizes of the CHD genes from one allele on the W and another allele on the Z CHD chromosome, whereas male birds have one size from two alleles on the Z CHD chromosome [17].

One of the few genes that is duplicated on both the W and Z chromosomes is the avian spindlin gene. This gene is useful for the sex identification of most bird species because of the divergence of intron sequences and the conservation of exon nucleotide sequences across at least 130 million years. The nucleotide sequences of the W- and Z-chromosome copies of this gene differ because the W chromosome does not undergo recombination. The third intron sequences of the Z- and W-chromosome spindlin genes were used to study the evolutionary relationships among certain Psittaciformes [9]. This study designed specific primer sets based on both the Z- and W-chromosome spindlin genes of birds using the LAMP technique. The results showed that LAMP separated Z- and W-chromosome spindlin genes and determined the identity of sun conure.

PCR is an accepted technique for identifying the sex of birds, but it has some significant drawbacks.

Specialized laboratory equipment for temperature cycling control and gel electrophoresis for amplicon separation are required; hence, starting a new laboratory is difficult and inappropriate for fieldwork [18]. The high sensitivity and specificity of LAMP, together with the rapid and visual observability of the results, make this method suitable for detecting a variety of microorganisms without the need for a thermal machine and electrophoresis device [10]. The traditional LAMP reaction consists of four primers (F3, B3, FIP, and BIP) that recognize six target gene regions. Six designed primers were applied to eight positions of the *spindlin* gene. The reaction of the LAMP procedure was accelerated more than 100 times by two of the six primers, known as loop primers (LF and LB), which hybridized to the stem-loop area into the structures of the LAMP products [19].

MgSO<sub>4</sub> is a cofactor that stimulates the activity of DNA polymerase and is responsible for binding to dNTP, primers, and DNA templates [20]. The most obvious color change was observed at 10 mM. The concentration of MgSO<sub>4</sub> affects the specificity and the process of DNA amplification [21]. Two mechanisms of betaine in the LAMP process have been proposed: First, it prepares the DNA template for DNA polymerase [20], and second, it causes unstable GC-rich sequences that facilitate the separation of the template DNA strands [21]. From the experimental results, the optimized final concentration from 0.2 M to 1 M was not different in both primer sets, consistent with a previous study by Jeevalatha *et al.* [22] that tested a betaine concentration of 0.2 M–0.8 M and found that every concentration of betaine caused a LAMP reaction.

Visualizing the DNA products of the LAMP reaction on gel electrophoresis is not necessary, but it can be done by looking for turbidity, which is caused by the release of free pyrophosphates during DNA amplification [11]. Determining the turbidity of low-quality products is challenging. Under natural or UV light, SYBR green I, a fluorescent indicator that also requires post-amplification, was visible [23]. A drawback of this procedure is that adding SYBR green I requires opening the cover of the tube, which increases the risk of product spread. This study used HNB as an indicator, which was added to the reaction before the amplification began. Without opening the microtube, it was possible to see the purple color turn to sky-blue [24] with the naked eye, significantly reducing the risk of contamination.

Results showed that the LAMP assay had a 100-fold higher sensitivity than PCR. This finding is consistent with previous studies by Tang *et al.* [23], Naveen and Bhat [25], and Wang *et al.* [26], who reported that LAMP had up to 100 times higher detection sensitivity than PCR. The experimental results demonstrated that the sex identification of sun conures using the SunSpin-W and SunSpin-Z primer sets was 100% accurate and was also able to sex-identify other

bird species in the Psittaciformes family using both primer sets. The accuracy of sex identification of sun conures using LAMP was comparable to that of PCR.

LAMP is a simple technique that uses fewer laboratory instruments. After target DNA amplification, the results can be visualized by the naked eye without the need for an open microtube, which reduces contamination of the amplicons in the working area [27, 28]. Therefore, the LAMP assay is a good choice for bird sex identification in the field.

## Conclusion

The LAMP technique for sex identification in sun conures and several other parrot species was developed by focusing on the *spindlin* gene. Color changes indicated positive results after 45 min of reaction time, and no complex procedures or usage-appropriate specialized equipment was required. Consequently, the proposed technique can enhance field usability and convenience. While our approach demonstrates promise, there are notable limitations that need addressing. Specifically, the method for sex identification requires the execution of two separate reactions (SunSpinW and SunSpinZ) from a single sample. To overcome this, future work should focus on enhancing the methodology to enable result analysis within a single tube.

## Authors' contributions

PW and PL: Designed and supervised the study and drafted and revised the manuscript. SP and KW: Preparation of gene constructs and conducted the PCR. SJ: Optimization of the LAMP technique. SS: Supervised the study and revised the manuscript. All authors have read, reviewed, and approved the final manuscript.

## Acknowledgments

This study was funded by the Faculty of Veterinary Medicine, Kasetsart University (No. 2564-1/09). The authors thank the Kamphaeng Saen Veterinary Diagnostic Center for providing laboratory facilities. We thank Parut Suksai and Ploypassorn Homklinkaew for reviewing and revising the manuscript.

## Competing Interests

The authors declare that they have no competing interests.

## Publisher's Note

Veterinary World remains neutral with regard to jurisdictional claims in published institutional affiliation.

## References

1. Purwaningrum, M., Nugroho, H.A., Asvan, M., Karyanti, K., Alviyanto, B., Kusuma, R. and Haryanto, A. (2019) Molecular techniques for sex identification of captive birds. *Vet. World*, 12(9): 1506–1513.
2. Dubiec, A. and Zagalska-Neubauer, M. (2006) Molecular techniques for sex identification in birds. *Biol. Lett.*, 43(1): 3–12.

3. Krocak-Zdańkowska, A., Woloszynska, M., Wierzbicki, H., Kurkowski, M., Grabowski, K., Piasecki, T., Galosi, L. and Urantowka, A. (2021) New bird sexing strategy developed in the order psittaciformes involves multiple markers to avoid sex misidentification: Debunked myth of the universal DNA marker. *Genes (Basel)*, 12: 878.
4. Tagliavia, M., Catania, V., Dell’Omo, G. and Massa, B. (2023) High-performance PCR for alleles discrimination of chromo-helicase-DNA binding protein (CHD1) gene in bird sexing. *Biology (Basel)*, 12(2): 300.
5. Suh, A., Kriegs, J.O., Brosius, J. and Schmitz, J. (2011) Retroposon insertions and the chronology of avian sex chromosome evolution. *Mol. Biol. Evol.*, 28(11): 2993–2997.
6. Li, W., Xue, F., Li, L., Li, X., Yue, B. and Li, J. (2012) A triple-primer PCR approach for the sex identification of endangered *Phasianidae* birds. *Eur. J. Wildl. Res.*, 58(1): 289–294.
7. Itoh, Y., Suzuki, M., Ogawa, A., Munechika, I., Murata, K. and Mizuno, S. (2001) Identification of the sex of a wide range of Carinatae birds by PCR using primer sets selected from chicken EE0.6 and its related sequences. *J. Hered.*, 92(4): 315–321.
8. De Kloet, R.S. and De Kloet, S.R. (2003) Evolution of the spindlin gene in birds: Independent cessation of the recombination of sex chromosomes at the spindlin locus in neognathous birds and tinamous, a palaeognathous avian family. *Genetica*, 119(3): 333–342.
9. De Kloet, R.S. and De Kloet, S.R. (2005) The evolution of the spindlin gene in birds: Sequence analysis of an intron of the spindlin W and Z gene reveals four major divisions of the psittaciformes. *Mol. Phylogenet. Evol.*, 36(3): 706–721.
10. Notomi, T., Okayama, H., Masubuchi, H., Yonekawa, T., Watanabe, K., Amino, N. and Hase, T. (2000) Loop-mediated isothermal amplification of DNA. *Nucleic Acids Res.*, 28(12): E63.
11. Mori, Y., Nagamine, K., Tomita, N. and Notomi, T. (2001) Detection of loop-mediated isothermal amplification reaction by turbidity derived from magnesium pyrophosphate formation. *Biochem. Biophys. Res. Commun.*, 289(1): 150–154.
12. Fischbach, J., Xander, N.C., Frohme, M. and Glökler, J.F. (2015) Shining a light on LAMP assays—a comparison of LAMP visualization methods including the novel use of berberine. *Biotechniques*, 58(4): 189–194.
13. Tomita, N., Mori, Y., Kanda, H. and Notomi, T. (2008) Loop-mediated isothermal amplification (LAMP) of gene sequences and simple visual detection of products. *Nat. Protoc.*, 3(5): 877–882.
14. Tanner, N.A., Zhang, Y. and Evans, T.C. Jr. (2015) Visual detection of isothermal nucleic acid amplification using pH-sensitive dyes. *Biotechniques*, 58(2): 59–68.
15. Zaczek-Moczyłowska, M.A., Mohamed-Smith, L., Toldrà, A., Hooper, C., Campàs, M., Furones, M.D., Bean, T.P. and Campbell, K. (2020) A single-tube HNB-based loop-mediated isothermal amplification for the robust detection of the ostreid herpesvirus 1. *Int. J. Mol. Sci.*, 21(18): 6605.
16. Rudbeck, L. and Dissing, J. (1998) Rapid, simple alkaline extraction of human genomic DNA from whole blood, buccal epithelial cells, semen and forensic stains for PCR. *Biotechniques*, 25(4): 588–590, 592.
17. Fridolfsson, A.K., and Ellegren, H. (1999) A simple and universal method for molecular sexing of non-ratite birds. *J. Avian Biol.*, 30(1): 116–121.
18. Centeno-Cuadros, A., Abbasi, I. and Nathan, R. (2017) Sex determination in the wild: A field application of loop-mediated isothermal amplification successfully determines sex across three raptor species. *Mol. Ecol. Resour.*, 17(2): 153–160.
19. Nagamine, K., Hase, T. and Notomi, T. (2002) Accelerated reaction by loop-mediated isothermal amplification using loop primers. *Mol. Cell. Probes*, 16(3): 223–229.
20. Fiorentini, D., Cappadone, C., Farruggia, G. and Prata, C. (2021) Magnesium: Biochemistry, nutrition, detection, and social impact of diseases linked to its deficiency. *Nutrients*, 13(4): 1136.
21. Lorenz, T.C. (2012) Polymerase chain reaction: Basic protocol plus troubleshooting and optimization strategies. *J. Vis. Exp.*, 63: e3998.
22. Jeevalatha, A., Kaundal, P., Kumar, R., Raigond, B., Kumar, R., Sharma, S. and Chakrabarti, S.K. (2018) Optimized loop-mediated isothermal amplification assay for Tomato leaf curl New Delhi virus-[potato] detection in potato leaves and tubers. *Eur. J. Plant Pathol.*, 150(3): 565–573.
23. Tang, M.J., Zhou, S., Zhang, X.Y.J., Pu, H., Ge, Q.L., Tang, X.J. and Gao, Y.S. (2011) Rapid and sensitive detection of *Listeria monocytogenes* by loop-mediated isothermal amplification. *Curr. Microbiol.*, 63(6): 511–516.
24. Goto, M., Honda, E., Ogura, A., Nomoto, A. and Hanaki, K. (2009) Colorimetric detection of loop-mediated isothermal amplification reaction by using hydroxy naphthol blue. *Biotechniques*, 46(3): 167–172.
25. Naveen, K.P. and Bhat, A.I. (2020) Reverse transcriptase loop-mediated isothermal amplification and reverse transcriptase recombinase amplification assays for rapid and sensitive detection of cardamom vein clearing virus. *3 Biotech*, 10(6): 250.
26. Wang, L., Zhang, C., Chen, G., Wang, Y. and Fu, M. (2020) Development of a rapid screening test for *Karenia mikimotoi* by using loop-mediated isothermal amplification and lateral flow dipstick. *J. Appl. Phycol.*, 32(5): 3143–3155.
27. Parida, M., Sannarangaiah, S., Dash, P.K., Rao, P.V. and Morita, K. (2008) Loop mediated isothermal amplification (LAMP): A new generation of innovative gene amplification technique; perspectives in clinical diagnosis of infectious diseases. *Rev. Med. Virol.*, 18(6): 407–421.
28. Soroka, M., Wasowicz, B. and Rymaszewska, A. (2021) Loop-mediated isothermal amplification (LAMP): The better sibling of PCR? *Cells*, 10(8): 1931.

\*\*\*\*\*